

ion IMAGINGSM

DIGITISE
YOUR DIAGNOSES,
INFORM
YOUR PATIENTS

4K
FULLHD



Digitisation of slit lamp

Distributed by:

Q Quante
medical



With ION, Quantel Medical is offering an innovative approach to slit-lamp imaging by combining a new beam-splitter with an Apple® camera.

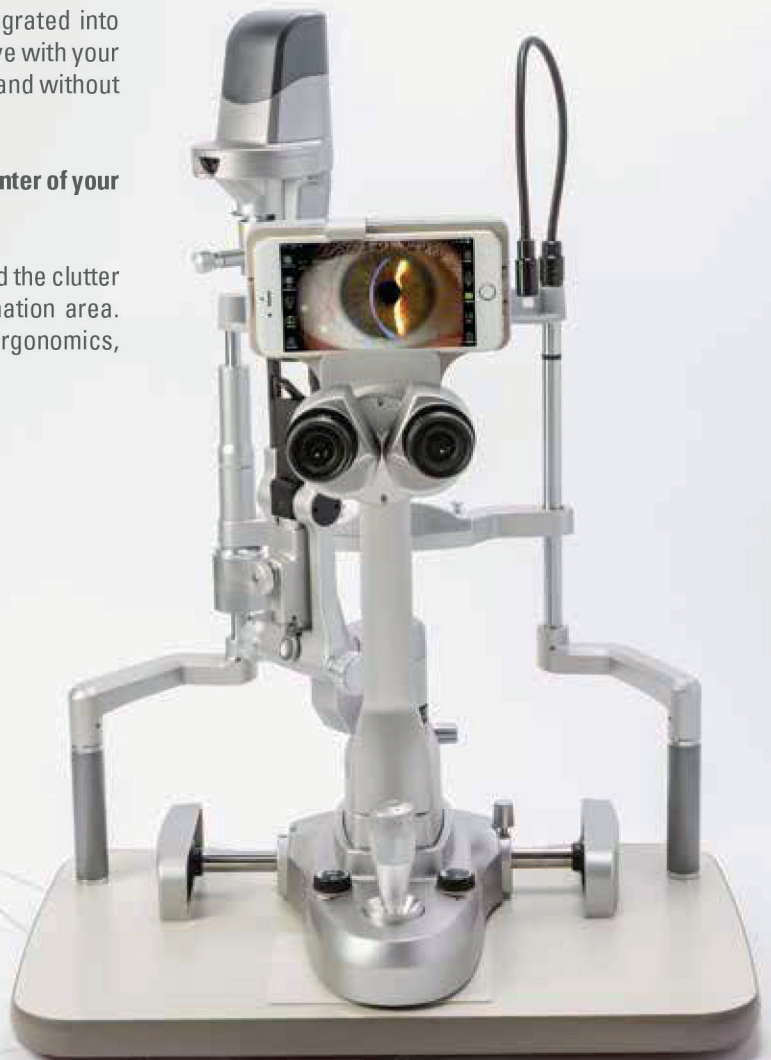
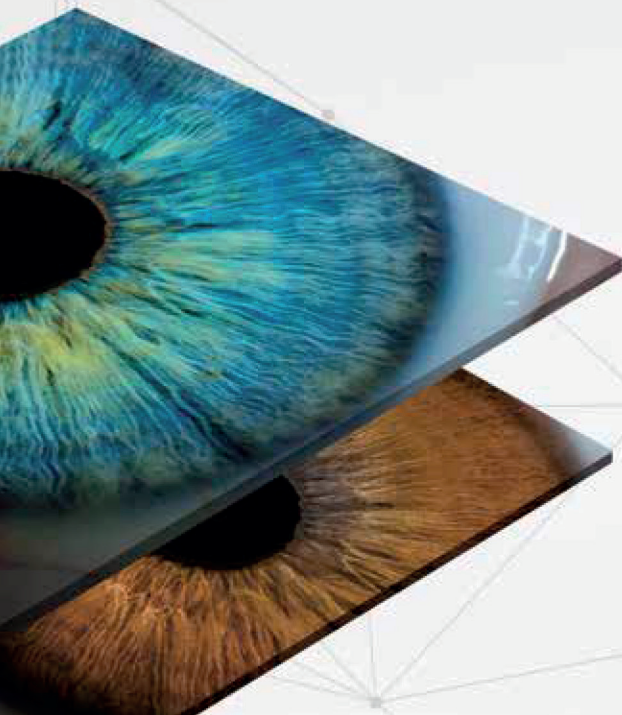
TOGETHER THEY CONSTITUTE AN **EXTREMELY SOPHISTICATED IMAGING SYSTEM** WHICH ENABLES YOU TO **DIGITISE AND ARCHIVE YOUR DIAGNOSES**, AS WELL AS **PATIENT INFORMATION**.

■ INTEGRATED SYSTEM WITH COMPACT DESIGN

The ION system consists of an **all-in-one product**, fully integrated into the slit lamp. Its design allows you to stay focused and effective with your diagnosis, without changing the process of your examination and without interrupting it.

With the Ion concept, **your patient continues to be the very center of your attention**.

Its resolutely modern and compact design means you can avoid the clutter of a computer, a mouse and network cables in your examination area. In this way, it preserves your work environment and your ergonomics, further improving **patient diagnosis and monitoring**.



Imaging from the anterior segment to the retina



■ OPTIMISED

- Intra-optic beam splitter with a compact, refined design
- "Head-up" display on a large screen
- ION application dedicated to imaging of the anterior segment and the retina
- Compatible with most slit lamps on the market (contact your local representative)

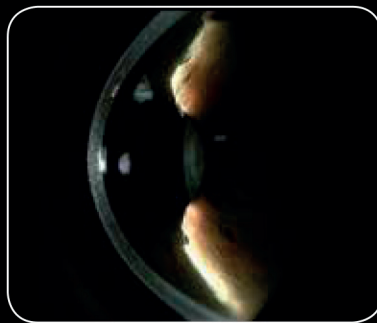
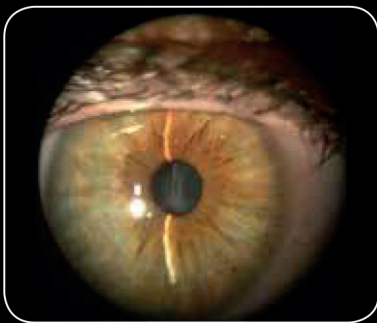
■ INTUITIVE

- Very intuitive and easy-to-use ION application
- Easy capture of very high resolution images and videos (4K) with a simple click on the screen or via a Bluetooth pedal

■ CONNECTED

- Wireless display of the images on your various screens (Wifi, Apple TV)
- Enables archiving and rapid sharing of images via the Cloud
- Bluetooth pedal for capturing images or videos in very high resolution

FROM THE ANTERIOR SEGMENT TO THE RETINA



The ION application includes automatic archiving to the Cloud and the transmission of data and images on the EMR or PACS systems.



TECHNICAL SPECIFICATIONS

HARDWARE

Type:	Beam splitter/Intra-optical adapter
Optical splitter:	2 positions: - low: 100% for the eyepiece; - high: 70% for the camera, 30% for the eyepiece
Dimensions:	17.8 (H) x 5.5 (D) x 17.2 (L) cm
Weight:	1.81 kg
Image capture:	Bluetooth footswitch
Camera:	Iphone 6 Plus: 8 MP; Iphone 6S Plus: 12 MP
Display:	5.5 inch Apple® Retina HD back-lit LED
- Camera resolution:	1920*1080p at 401 ppi
- Video resolution (fps):	1080p HD (30 or 60 fps)
- Contrast ratio:	1300/1
- Processor:	A8 (6 Plus) and A9 (6S Plus) with 64 bits

SOFTWARE

Export:	Local network, Cloud and iOS photos
Capture modes:	HR images and videos.
Data security:	HIPAA, password protection, AES encryption
Imaging technology*:	Apple® HDR, Focus Pixel, image stabilisation technology
Networking:	WiFi connection
Included with the package:	Ion optical splitter, Ion application, Bluetooth control unit, adapter with 2 USB ports, USB cable, pedal with cable, iPhone charger cable, 10 adhesives for cable grommets, 14 cable grommets; cables, 2 adhesive velcros, 2 vinyl optical covers for lens. IPHONE NOT INCLUDED.

*Apple® is a brand name of Apple Inc.

Specifications are subject to change without notice.

Copyright © Marco Ophthalmic, Inc. 2018. All Rights Reserved.

www.quantel-medical.com

Registered office

Quantel Medical
11, rue du Bois Joli - CS40015
63808 Cournon d'Auvergne – FRANCE
Tel: +33 (0)4 73 745 745
Fax: +33 (0)4 73 745 700
E-mail: contact@quantel-medical.fr

North America

Quantel USA
49 Willow Peak Dr.
BOZEMAN, MT 59718 – USA
Tel: +1 877 782 6835
Fax: +1 406 522 2005
E-mail: info@quantelmedical.com

Poland

Quantel Medical
ul. Racławicka 93
02-634 Warsaw
E-mail: info@quantel-medical.pl

Offices

Thailand, Chiang Mai
Brazil, Rio De Janeiro