



BASICS OF OPTOMED AURORA

Training Presentation

Optomed  
**AURORA<sup>®</sup>**  
— *Saving Sight*



# Optomed Aurora, hand-held fundus camera

**Retinal module**  
FOV 50 degrees

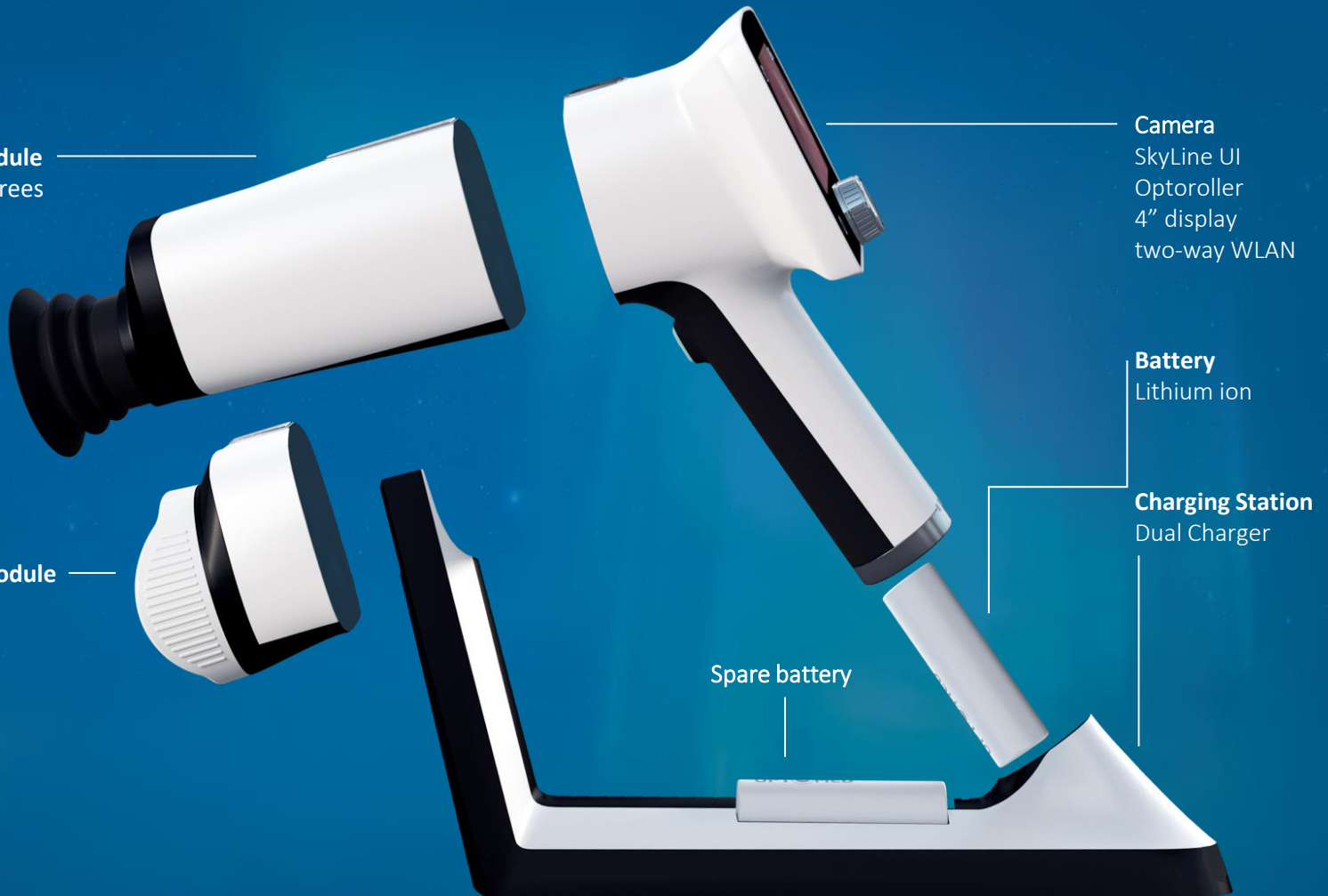
**Anterior module**

**Camera**  
SkyLine UI  
Optoroller  
4" display  
two-way WLAN

**Battery**  
Lithium ion

**Charging Station**  
Dual Charger

Spare battery

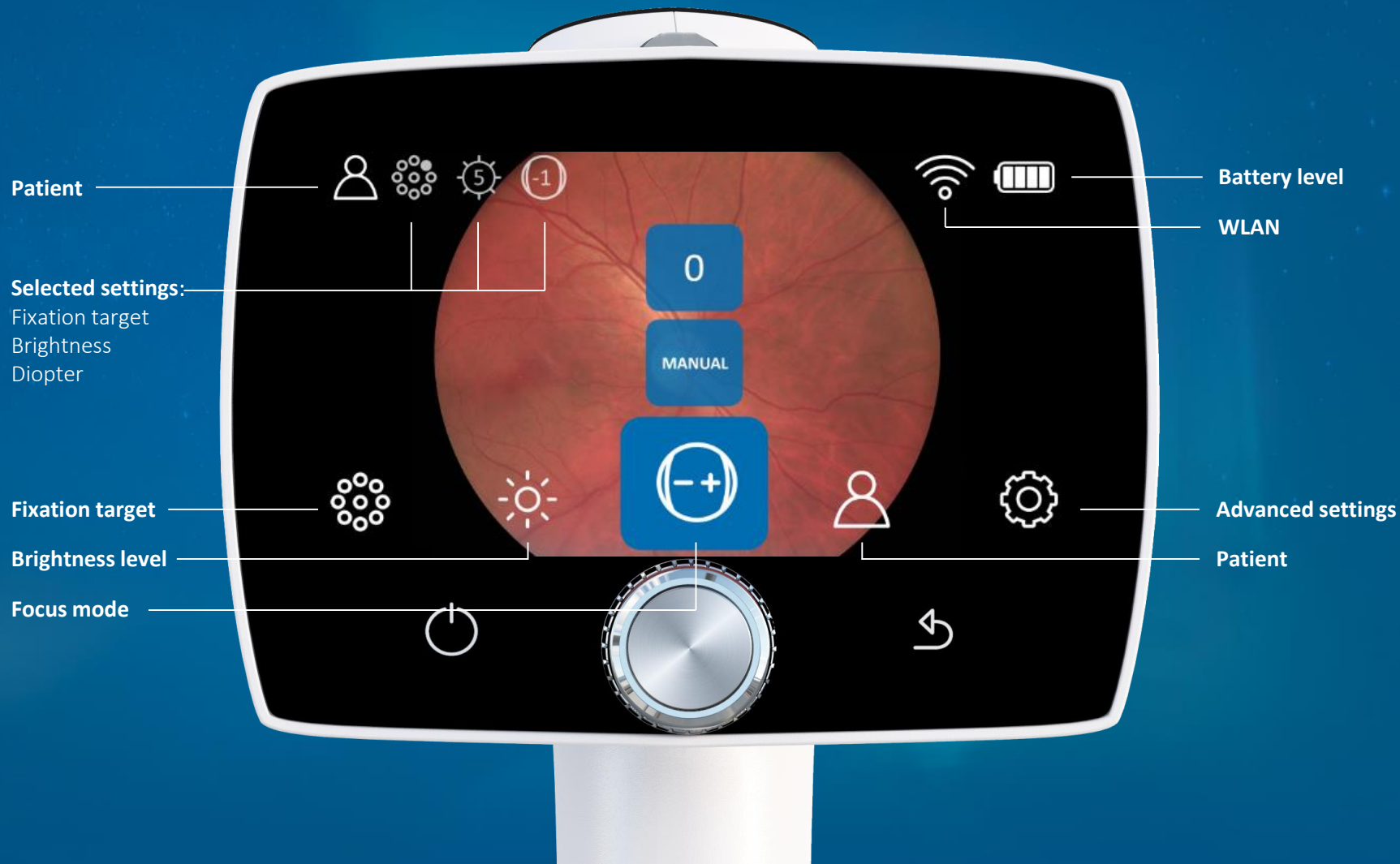


# Parts



# SkyLine UI and quick menu

Enter quick menu by pressing Optoroller



# Advanced menu

## Advanced camera settings

- Restore factory settings
- Language
- Erase image memory
- WLAN
- Date and time
- USB write protection
- Start query
- Camera software version

## Advanced imaging settings

- Quick image
- Half press capture
- Capture mode
- Imaging modes
- Capture settings in image
- Automatic IR contrast stretching



# Charging Station

Aurora Charging Station is used for:

- Charging the camera battery
- Charging spare battery
- Transfer images to computer via USB
- Storing device when retinal module is attached

**NOTE!** Camera can only be placed to charging station when retina module is attached.





# Charging Station

Placing camera to the charging station:

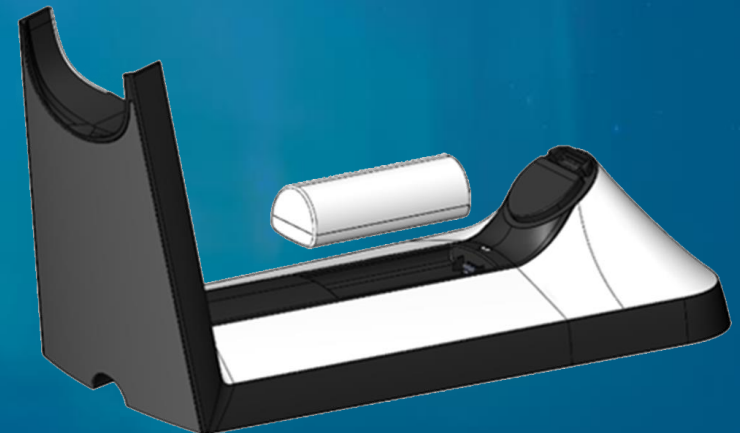
- Place camera into the charging station when Retinal Module is attached.
- Place front part of optics module onto the support and move rear hand part carefully into the connector.
- Avoid excessive force to prevent camera and charging station connectors from breaking





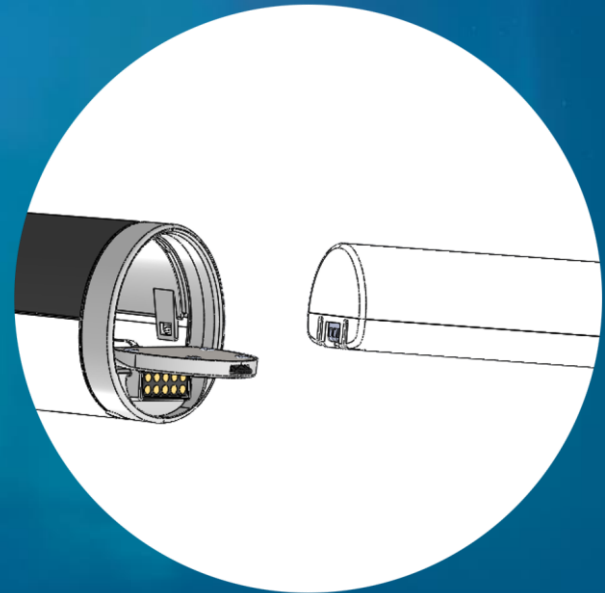
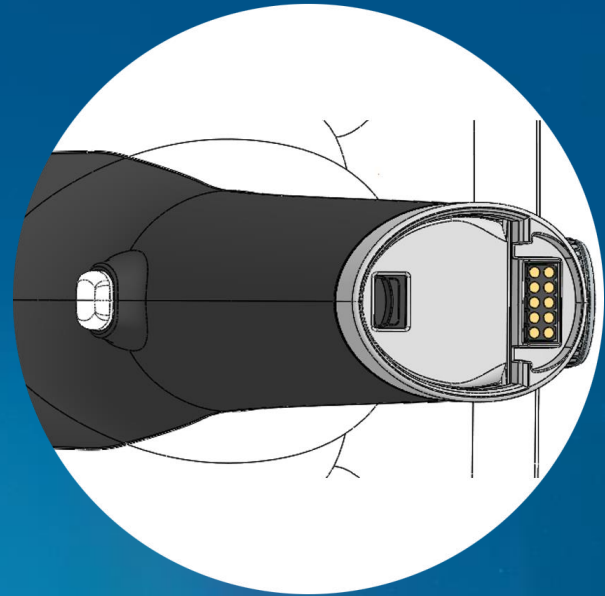
# Battery

- Otomed Aurora camera has rechargeable Lithium ion battery.
- The duration in constant use is about 2,5 hours.
- Charge battery when **camera placed to Charging Station.**
- Charge **extra battery** by placing it to Charging Station.



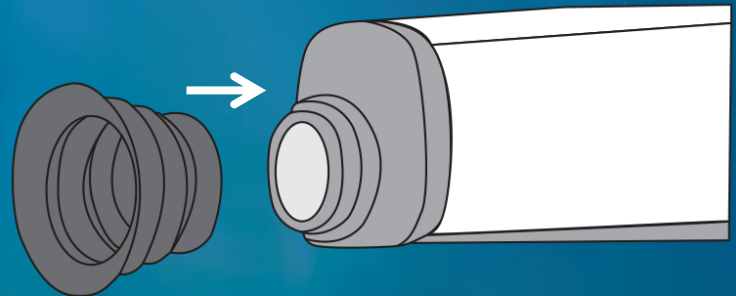
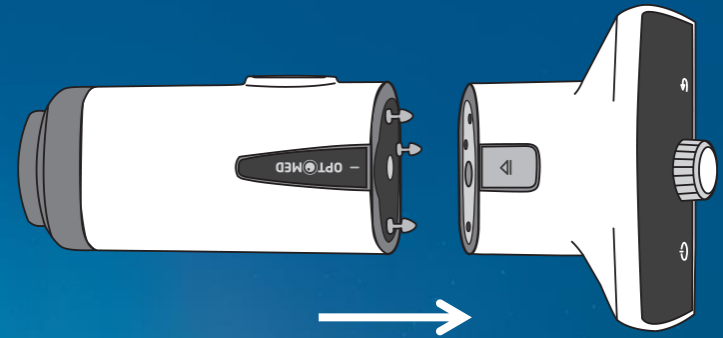
# Replacing battery

- Ensure that camera is powered off when replacing the battery. **Open the battery cover** by sliding the battery cover release knob. \_\_\_\_\_
- **Take the old battery out** of the camera and insert the new battery. Press the cover firmly on place. \_\_\_\_\_



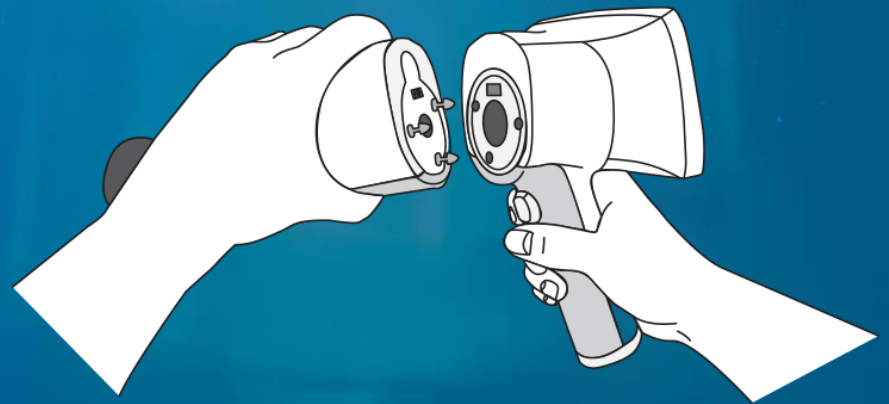
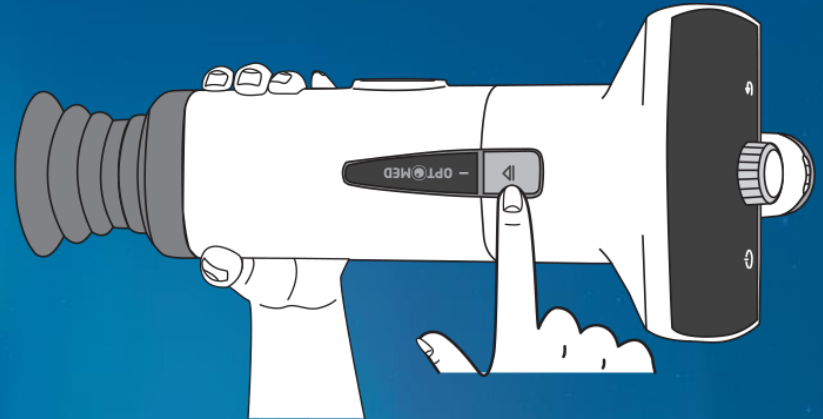
# Attaching optics

- **Attach optics module** to the camera by connecting firmly the bayonet legs of optics module to bayonet holes of camera.
- **Place the eye cup** to the optics ring of Aurora Retinal Module.



# Deattaching optics

- **To detach optics module** press eject button on the top of the camera and take camera and optics module apart



# Image transfer

## Image transfer through WLAN

- Enable wlan by installing Aurora Client PC software which is found from memory stick inside the sales case.

## Image transfer through USB connection

- Transfer images via USB by placing camera to cradle.





**Optomed Oy**

Yrttpellontie 1,  
90230 Oulu, Finland  
Tel: +358 20 741 3380  
info@optomed.com

**www.optomed.com**

**Designed in Finland**